

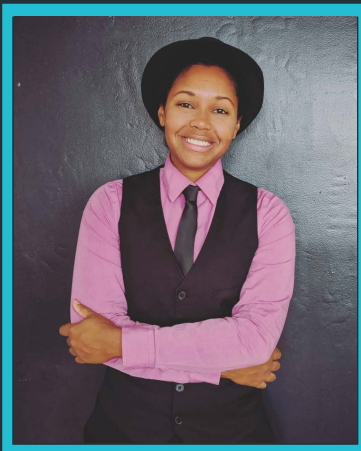
# WGSS COFFEE HOUR SERIES

co-sponsored by the African Feminist Initiative

## SM RODRIGUEZ

Assistant Professor of Sociology, Hofstra University

### "The Economies of Queer Inclusion: Transnational Organizing for LGBTI Rights in Uganda"



The Anti-Homosexuality (dubbed "Kill the Gays") Bill of 2009 propelled Uganda to the forefront of global media. The attention earned by the proposed legislation opened avenues for transnational cooperation between U.S.-based Human and LGBTI Rights organizations and LGBTI Ugandans. *The Economies of Queer Inclusion* focuses on this transnational relationship and the complications that arise when international currency and professionalization transform grassroots organizing. This book excavates how transnational advocacy, which aims to empower LGBTI rights activism, actually restructures and, in some cases, limits local movements. With interview and ethnographic data, the research highlights how the introduction of international attention and funding causes organizations to restructure their movement goals and strategies in order to best attract desired partners. The funder-funded relationship causes both local discord and transnational divestment from alternate forms of organizing. The research presents a compelling, counternarrative that exposes that the development of this economy did not occur because of the Anti-Homosexuality, but rather inspired the legislation and then peaked in the five years following.

TUESDAY,  
OCT. 8

3:30 P.M.

127  
MOORE  
BUILDING



**PennState**  
College of the Liberal Arts

This publication is available in alternative media upon request. Penn State is an equal opportunity, affirmative action employer, and is committed to providing employment opportunities to all qualified applicants without regard to race, color, religion, age, sex, sexual orientation, gender identity, national origin, disability or protected veteran status. Penn State encourages qualified persons with disabilities to participate in its programs and activities. If you anticipate needing any type of accommodation or have questions about the physical access provided, please consult Johey Verfaillie at 814-867-4561 or [juv12@psu.edu](mailto:juv12@psu.edu), in advance of your participation or visit. U.Ed. 20-192